

# FOR SALE

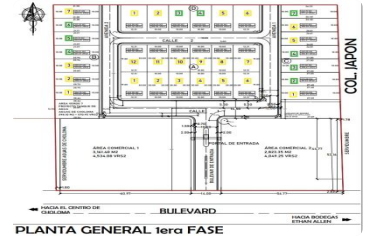
## \$ 25,000.00 USD

Honduras - Cortes

Choloma

Listing ID: 002913938005

Residential Santa Mónica | Residential Lots and Homes for Sale Discover a new way of living in a modern, well-planned residential development designed to provide security, appreciation potential, and quality of life. Location Located in Choloma, Cortés, just 400 meters from the new Ticamaya highway, in a strategic high-growth area with easy access. Available Options Residential Lots Available in the following sizes: 10 x20 meters – approximately 286 square varas 10 x26 meters – approximately 391 square varas Price per square vara: L. 2,350 Ideal for building at your own pace or investing in a high-growth area with strong appreciation potential. Modern Home Designs You can now purchase your lot with a home included. We offer three available models: Monserrath Mdel 1 50 m<sup>2</sup> of construction 2 bedrooms 1 bathroom Living room, dining room, and...



[SEE THIS PROPERTY ON THE MAP](#)



**LIDIA LOPEZ**  
SALES AGENT  
504 95181556  
[lilopez@remax-infinite-hn.com](mailto:lilopez@remax-infinite-hn.com)  
<https://www.remax-infinite-hn.com>



RE/MAX INFINITE GROUP

San Pedro Sula Area, San Pedro Sula Area, Honduras

Each office is independently owned and operated