

FOR LEASE

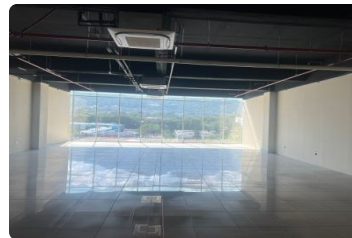
\$ 11,060.20 USD

Honduras - Cortes

San Pedro Sula

Listing ID: 002913420032

CORPORATE OFFICE FOR LEASE | METRO PARK TOWER – SAN PEDRO SULA Position your business in one of San Pedro Sula's most prestigious corporate addresses. ?? Metro Park Tower – 6th Floor?? Office Area: 567.19 m² (6,105 sq. ft.)?? 14 Exclusive Parking Spaces This premium corporate office offers the ideal environment for companies seeking a strategic location, modern facilities, and a professional setting that reflects excellence and success. Property Highlights: Spacious 567.19 m² (6,105 sq. ft.) office layout. 14 exclusive parking spaces for executives and visitors. Prime location on the 6th floor of Metro Park Tower. Class A corporate building with excellent accessibility and security. Ideal for regional headquarters, multinational corporations, professional firms, and growing businesses. Enhance your corporate presence with an office designed to support prod...



[SEE THIS PROPERTY ON THE MAP](#)



CESAR REYES

SALES AGENT

504 94592570

creyes@remax-infinite-hn.com

<https://www.remax-infinite-hn.com>



RE/MAX INFINITE GROUP

San Pedro Sula Area, San Pedro Sula Area, Honduras

Each office is independently owned and operated