

# FOR LEASE

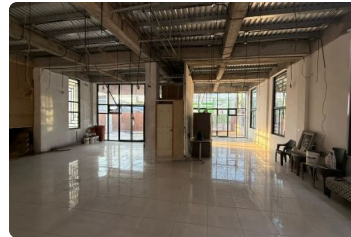
## \$ 3,007.00 USD

Honduras - Comayagua

Siguatpeque

Listing ID: 002893192044

CORPORATE BUILDING FOR LEASE | SIGUATEPEQUE Some locations simply exist... and some spaces elevate a brand's presence from the very first impression. This modern corporate building in Siguatpeque offers a strategic combination of image, accessibility, and commercial functionality — ideal for businesses seeking growth, positioning, and long-term projection. Ground floor available only Size: 286.84 m<sup>2</sup> Monthly Lease: \$3,007 Approx. Rate: \$10.48 per m<sup>2</sup> Features: • Spacious parking area • Drive-thru/service area • Exterior restroom • Modern corporate façade • Excellent commercial exposure • Easy vehicle access Ideal for: • Medical clinics • Restaurants • Pharmacies • Corporate offices • Franchise businesses • Financial institutions • Customer service companies In business, location creates opportunities... but the right...



[SEE THIS PROPERTY ON THE MAP](#)



SILVIA AMLA  
SALES AGENT  
504 92987009  
[savila@remax-experts-hn.com](mailto:savila@remax-experts-hn.com)



RE/MAX EXPERTS

San Pedro Sula Area, San Pedro Sula Area, Honduras

Each office is independently owned and operated