

FOR SALE

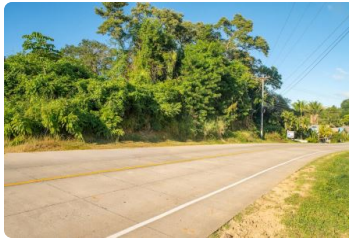
\$ 1,500,000.00 USD

Honduras - Islas de la bahía

Roatan

Listing ID: 002251906015

Exceptional opportunity to acquire 2 acres of commercial road-front land with approximately 320 feet of frontage in the heart of Sandy Bay, one of Roatán's most active and desirable corridors. This highly visible parcel fronts directly onto the main paved road and features beautiful ocean views, making it well suited for a variety of commercial uses such as retail, offices, mixed-use projects, hospitality, or service-based businesses. The property includes two on-site water wells, each approximately 185 feet deep, adding significant value and reliability for future development. Surrounded by established businesses, residential neighborhoods, and nearby amenities, the land offers excellent access, strong exposure, and steady traffic flow. The size of the parcel provides flexibility for development, including parking, multiple structures, or future expansion. A rare opportunity to secure a well-locate...



[SEE THIS PROPERTY ON THE MAP](#)



GABRIELY HERNANDEZ
SALES AGENT
504 94576277
gavy@propertyroatan.com



RE/MAX DREAMSCAPES

Coconut Plaza, West End Village, Roatan Is., Bay Islands, Honduras

Each office is independently owned and operated